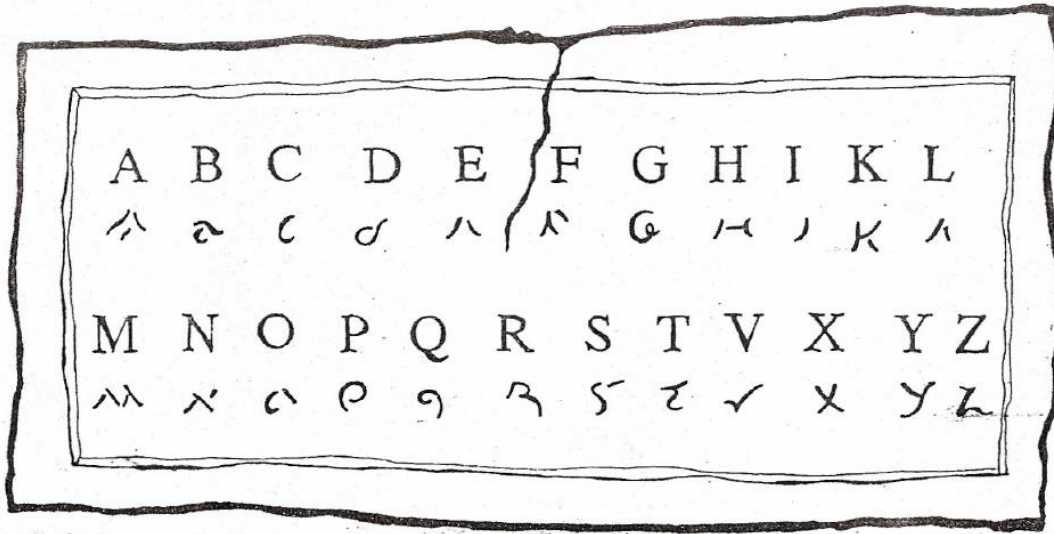


Using the Roman Alphabet.

Below the capital letters you can see them written in Roman script.

Look very carefully, the Romans didn't use all of the letters that we do. Which letters don't they use that we do?



Now try to decode the message written below. Where there are letters missing (because the Romans didn't use them), the following symbol has been used.

□ = a letter that doesn't exist in the Roman alphabet.

Ϸ⋈λ Ϸα⋈λ Ϸλ Ϸ Ϸ⋈λ Ϸ⋈λ
 ⋈ Ϸ⋈λ Ϸ Ϸ⋈λ Ϸ⋈λ Ϸ⋈λ Ϸ⋈λ Ϸ⋈λ
 λ □ ⋈λ Ϸ Ϸ Ϸ Ϸ Ϸ⋈λ Ϸ⋈λ
 Ϸ⋈λ □ Ϸ Ϸ⋈λ Ϸ Ϸ⋈λ Ϸ⋈λ
 Ϸ⋈λ Ϸ⋈λ Ϸ⋈λ Ϸ⋈λ Ϸ⋈λ Ϸ⋈λ Ϸ⋈λ Ϸ⋈λ

Why not write a message for a brother, sister or friend to decode?